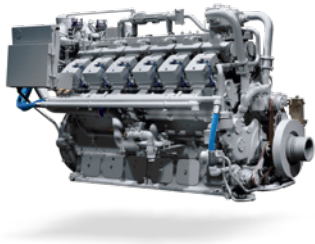


# Products introduction & overview - Caterpillar

## Product



	CG 260 (4.5)				CG 132 B				CG 170 B				CG 132				CG 170				CG 260 (excluding 4.5)				GCM 34				
	Natural gas	Landfill gas	Sewage gas	Bio-gas	Natural gas	Landfill gas	Sewage gas	Bio-gas	Natural gas	Landfill gas	Sewage gas	Bio-gas	Natural gas	Landfill gas	Sewage gas	Bio-gas	Natural gas	Landfill gas	Sewage gas	Bio-gas	Natural gas	Landfill gas	Sewage gas	Bio-gas	Natural gas	Landfill gas	Sewage gas	Bio-gas	
Mobil SHC Pegasus™ 40																													
Mobil Pegasus™ 1													■	■	■	■	■	■	■	■	■	■	■	■					
Mobil Pegasus™ 1105																													
Mobil Pegasus™ 1107	■	■	■	■	■	■	■	■	■	■	■	■	■	■	■	■	■	■	■	■	■	■	■	■	■	■	■	■	
Mobil Pegasus™ 1005	■	■	■	■	■	■	■	■	■	■	■	■	■	■	■	■	■	■	■	■	■	■	■	■	■	■	■	■	
Mobil Pegasus™ 805													■	■	■	■	■	■	■	■	■	■	■	■	■	■	■	■	
Mobil Pegasus™ 705*													■	■	■	■	■	■	■	■	■	■	■	■	■	■	■	■	
Mobil Pegasus™ 710																													
Mobil Pegasus™ 605 Ultra 40	■	■	■	■	■	■	■	■	■	■	■	■	■	■	■	■	■	■	■	■	■	■	■	■	■	■	■	■	
Mobil Pegasus™ 605													■	■	■	■	■	■	■	■	■	■	■	■	■	■	■	■	
Mobil Pegasus™ 610																													
Mobil Pegasus™ 610 Ultra*		■	■	■		■	■	■		■	■	■		■	■	■		■	■	■		■	■	■		■	■	■	

The specifications of the respective plant and engine manufacturers are priorities when selecting the right engine oil.

■ Approved


\* For extended oil drain intervals

This document is provided for information purposes only. ExxonMobil accepts no responsibility for the contents of this document and gives no warranty to any product recommendations made within or about its effectiveness when applied to the users' business. It is the users' sole responsibility to ensure that the correct product is chosen for the given application. Always consult OEM manuals for proper recommendations for your equipment, which may depend on, for example, make, model, operating conditions. ExxonMobil shall not be responsible for any loss sustained by any person or entity in connection with use of this document. Due to continual product research and development by ExxonMobil and/or OEM, the information contained herein is subject to change without notice. All products may not be available locally. The information contained herein is Proprietary to Exxon Mobil Corporation or one of its subsidiaries. This information should not be given to unauthorised third parties without prior written consent of ExxonMobil. For additional information, please contact the ExxonMobil Technical Help Desk or contact the local ExxonMobil representative.

Updated March 2021

# Products introduction & overview - Cummins

## Product

	QSV 81/91G (14&16 Bar BMEP)				QSK 60G				QSV 91G (18 Bar BMEP)				HSK 78G			
	Natural gas	Landfill gas	Sewage gas	Bio-gas	Natural gas	Landfill gas	Sewage gas	Bio-gas	Natural gas	Landfill gas	Sewage gas	Bio-gas	Natural gas	Landfill gas	Sewage gas	Bio-gas
Mobil SHC Pegasus™ 40																
Mobil Pegasus™ 1																
Mobil Pegasus™ 1105																
Mobil Pegasus™ 1107													■			
Mobil Pegasus™ 1005	■				■				■							
Mobil Pegasus™ 805	■				■				■							
Mobil Pegasus™ 705	■															
Mobil Pegasus™ 710																
Mobil Pegasus™ 605 Ultra 40																
Mobil Pegasus™ 605																
Mobil Pegasus™ 610		■	■	■												
Mobil Pegasus™ 610 Ultra*																

The specifications of the respective plant and engine manufacturers are priorities when selecting the right engine oil.

■ Approved

\* For extended oil drain intervals


This document is provided for information purposes only. ExxonMobil accepts no responsibility for the contents of this document and gives no warranty to any product recommendations made within or about its effectiveness when applied to the users' business. It is the users' sole responsibility to ensure that the correct product is chosen for the given application. Always consult OEM manuals for proper recommendations for your equipment, which may depend on, for example, make, model, operating conditions. ExxonMobil shall not be responsible for any loss sustained by any person or entity in connection with use of this document. Due to continual product research and development by ExxonMobil and/or OEM, the information contained herein is subject to change without notice. All products may not be available locally. The information contained herein is Proprietary to Exxon Mobil Corporation or one of its subsidiaries. This information should not be given to unauthorised third parties without prior written consent of ExxonMobil. For additional information, please contact the ExxonMobil Technical Help Desk or contact the local ExxonMobil representative.

Updated March 2021

# Products introduction & overview – Jenbacher

The table below shows all product approvals for Type 2 to 4C engines. For Type 6C to 9 see next page.

## Product

	Type 2				Type 3				Type 4 A				Type 4 B				Type 4 C <sup>®</sup>			
	Natural gas	Landfill gas	Sewage gas	Bio-gas	Natural gas	Landfill gas	Sewage gas	Bio-gas	Natural gas	Landfill gas	Sewage gas	Bio-gas	Natural gas	Landfill gas	Sewage gas	Bio-gas	Natural gas	Landfill gas	Sewage gas	Bio-gas
Mobil Pegasus™ 1105*	■				■				■				■				■			
Mobil Pegasus™ 1107*	■				■								■				■			
Mobil Pegasus™ 1005	■				■				■				■							
Mobil Pegasus™ 805	■				■				■	■	■	■	■	■	■	■	■	■	■	■
Mobil Pegasus™ 705	■				■				■	■	■	■	■	■	■	■	■	■	■	■
Mobil Pegasus™ 710			■	■			■	■												
Mobil Pegasus™ 605 Ultra 40		■	■	■		■	■	■		■	■	■		■	■	■		■	■	■
Mobil Pegasus™ 605														■	■	■				
Mobil Pegasus™ 610		■				■														
Mobil Pegasus™ 610 Ultra*		■	■	■		■	■	■												
Jenbacher N Oil 40**	◆				◆				◆				◆				◆			

The specifications of the respective plant and engine manufacturers are priorities when selecting the right engine oil.

■ Approved

▲ Field test

◆ OEM Recommended

\* For extended oil drain intervals

\*\* For doubled oil drain intervals vs other INNIO-approved gas engine oils. © 2020 INNIO. All rights reserved. Jenbacher is a trademark application or registered trademark of INNIO or one of its affiliates


This document is provided for information purposes only. ExxonMobil accepts no responsibility for the contents of this document and gives no warranty to any product recommendations made within or about its effectiveness when applied to the users' business. It is the users' sole responsibility to ensure that the correct product is chosen for the given application. Always consult OEM manuals for proper recommendations for your equipment, which may depend on, for example, make, model, operating conditions. ExxonMobil shall not be responsible for any loss sustained by any person or entity in connection with use of this document. Due to continual product research and development by ExxonMobil and/or OEM, the information contained herein is subject to change without notice. All products may not be available locally. The information contained herein is Proprietary to Exxon Mobil Corporation or one of its subsidiaries. This information should not be given to unauthorised third parties without prior written consent of ExxonMobil. For additional information, please contact the ExxonMobil Technical Help Desk or contact the local ExxonMobil representative.

Updated March 2021

# Products introduction & overview - Jenbacher

The table below shows all product approvals for Type 6C to 9 engines. For Type 2 to 4C see previous page.

## Product

	Type 6 C / 6 E				Type 6 F / 6 J				Type 6 H / 6 K				Type 9			
	Natural gas	Landfill gas	Sewage gas	Bio-gas	Natural gas	Landfill gas	Sewage gas	Bio-gas	Natural gas	Landfill gas	Sewage gas	Bio-gas	Natural gas	Landfill gas	Sewage gas	Bio-gas
Mobil Pegasus™ 1105*	■															
Mobil Pegasus™ 1107*	■				■				■				■			
Mobil Pegasus™ 1005	■															
Mobil Pegasus™ 805	■		■	■	■	■	■	■					▲			
Mobil Pegasus™ 705	■		■	■	■	■	■	■					■			
Mobil Pegasus™ 710																
Mobil Pegasus™ 605 Ultra 40		■	■	■												
Mobil Pegasus™ 605		■														
Mobil Pegasus™ 610																
Mobil Pegasus™ 610 Ultra*																
Jenbacher N Oil 40**	◆				◆				◆				◆			

The specifications of the respective plant and engine manufacturers are priorities when selecting the right engine oil.

- Approved
- ▲ Field test
- ◆ OEM Recommended

\* For extended oil drain intervals

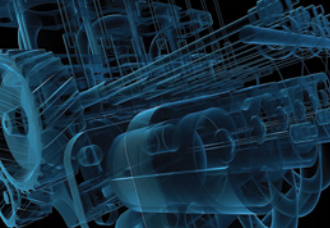
\*\* For doubled oil drain intervals vs other INNIO-approved gas engine oils. © 2020 INNIO. All rights reserved. Jenbacher is a trademark application or registered trademark of INNIO or one of its affiliates

This document is provided for information purposes only. ExxonMobil accepts no responsibility for the contents of this document and gives no warranty to any product recommendations made within or about its effectiveness when applied to the users' business. It is the users' sole responsibility to ensure that the correct product is chosen for the given application. Always consult OEM manuals for proper recommendations for your equipment, which may depend on, for example, make, model, operating conditions. ExxonMobil shall not be responsible for any loss sustained by any person or entity in connection with use of this document. Due to continual product research and development by ExxonMobil and/or OEM, the information contained herein is subject to change without notice. All products may not be available locally. The information contained herein is Proprietary to Exxon Mobil Corporation or one of its subsidiaries. This information should not be given to unauthorised third parties without prior written consent of ExxonMobil. For additional information, please contact the ExxonMobil Technical Help Desk or contact the local ExxonMobil representative.

Updated March 2021

# Products introduction & overview - MAN

## Product

	E0834				E0836				E2676				E2876				E2848				E3268				E2842				E3262							
	Natural gas	Landfill gas	Sewage gas	Bio-gas	Natural gas	Landfill gas	Sewage gas	Bio-gas	Natural gas	Landfill gas	Sewage gas	Bio-gas	Natural gas	Landfill gas	Sewage gas	Bio-gas	Natural gas	Landfill gas	Sewage gas	Bio-gas	Natural gas	Landfill gas	Sewage gas	Bio-gas	Natural gas	Landfill gas	Sewage gas	Bio-gas	Natural gas	Landfill gas	Sewage gas	Bio-gas				
Mobil SHC Pegasus™ 40	■				■				■				■				■				■				■				■				■			
Mobil Pegasus™ 1	■				■				■				■				■				■				■				■				■			
Mobil Pegasus™ 1105																																				
Mobil Pegasus™ 1107																																				
Mobil Pegasus™ 1005	■				■				■				■				■				■				■				■				■			
Mobil Pegasus™ 805																																				
Mobil Pegasus™ 705	■				■				■				■				■				■				■				■				■			
Mobil Pegasus™ 710		■	■	■		■	■	■		■	■	■		■	■	■		■	■	■		■	■	■		■	■	■		■	■	■		■	■	■
Mobil Pegasus™ 605 Ultra 40	■	■	■	■	■	■	■	■	■	■	■	■	■	■	■	■	■	■	■	■	■	■	■	■	■	■	■	■	■	■	■	■	■	■	■	■
Mobil Pegasus™ 605																																				
Mobil Pegasus™ 610		■	■	■		■	■	■		■	■	■		■	■	■		■	■	■		■	■	■		■	■	■		■	■	■		■	■	■
Mobil Pegasus™ 610 Ultra*		■	■	■		■	■	■		■	■	■		■	■	■		■	■	■		■	■	■		■	■	■		■	■	■		■	■	■

The specifications of the respective plant and engine manufacturers are priorities when selecting the right engine oil.

■ Approved

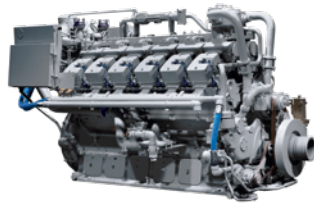
\* For extended oil drain intervals

This document is provided for information purposes only. ExxonMobil accepts no responsibility for the contents of this document and gives no warranty to any product recommendations made within or about its effectiveness when applied to the users' business. It is the users' sole responsibility to ensure that the correct product is chosen for the given application. Always consult OEM manuals for proper recommendations for your equipment, which may depend on, for example, make, model, operating conditions. ExxonMobil shall not be responsible for any loss sustained by any person or entity in connection with use of this document. Due to continual product research and development by ExxonMobil and/or OEM, the information contained herein is subject to change without notice. All products may not be available locally. The information contained herein is Proprietary to Exxon Mobil Corporation or one of its subsidiaries. This information should not be given to unauthorised third parties without prior written consent of ExxonMobil. For additional information, please contact the ExxonMobil Technical Help Desk or contact the local ExxonMobil representative.

Updated March 2021

# Products introduction & overview - MTU

## Product



	Series 400 Natural Aspirated				Series 400 Turbocharged				Series 4000 L32, L33				Series 4000 L61, L62, L63				Series 4000 L64			
	Natural gas	Landfill gas	Sewage gas	Bio-gas	Natural gas	Landfill gas	Sewage gas	Bio-gas	Natural gas	Landfill gas	Sewage gas	Bio-gas	Natural gas	Landfill gas	Sewage gas	Bio-gas	Natural gas	Landfill gas	Sewage gas	Bio-gas
Mobil SHC Pegasus™ 40	■				■															
Mobil Pegasus™ 1																				
Mobil Pegasus™ 1105																				
Mobil Pegasus™ 1107	■				■								▲				▲			
Mobil Pegasus™ 1005	■	■	■	■									■	■	■	■	■			
Mobil Pegasus™ 805	■	■	■	■	■	■	■	■	■				■	■	■	■				
Mobil Pegasus™ 705	■	■	■	■	■	■	■	■	■				■	■	■	■				
Mobil Pegasus™ 710						■	■	■												
Mobil Pegasus™ 605 Ultra 40		▲	▲	▲		▲	▲	▲												
Mobil Pegasus™ 605	■	■	■	■	■	■	■	■												
Mobil Pegasus™ 610						■	■	■												
Mobil Pegasus™ 610 Ultra*																				

The specifications of the respective plant and engine manufacturers are priorities when selecting the right engine oil.

- Approved
- ▲ Field test


\* For extended oil drain intervals

This document is provided for information purposes only. ExxonMobil accepts no responsibility for the contents of this document and gives no warranty to any product recommendations made within or about its effectiveness when applied to the users' business. It is the users' sole responsibility to ensure that the correct product is chosen for the given application. Always consult OEM manuals for proper recommendations for your equipment, which may depend on, for example, make, model, operating conditions. ExxonMobil shall not be responsible for any loss sustained by any person or entity in connection with use of this document. Due to continual product research and development by ExxonMobil and/or OEM, the information contained herein is subject to change without notice. All products may not be available locally. The information contained herein is Proprietary to Exxon Mobil Corporation or one of its subsidiaries. This information should not be given to unauthorised third parties without prior written consent of ExxonMobil. For additional information, please contact the ExxonMobil Technical Help Desk or contact the local ExxonMobil representative.

Updated March 2021

# Products introduction & overview - MWM

## Product

	TCG 2016				TCG 2020				TCG 2032				TCG 2032B				TCG 3016				TCG 3020			
	Natural gas	Landfill gas	Sewage gas	Bio-gas	Natural gas	Landfill gas	Sewage gas	Bio-gas	Natural gas	Landfill gas	Sewage gas	Bio-gas	Natural gas	Landfill gas	Sewage gas	Bio-gas	Natural gas	Landfill gas	Sewage gas	Bio-gas	Natural gas	Landfill gas	Sewage gas	Bio-gas
Mobil SHC Pegasus™ 40																								
Mobil Pegasus™ 1	■	■	■	■	■	■	■	■	■	■	■	■									■	■	■	■
Mobil Pegasus™ 1105																								
Mobil Pegasus™ 1107	■	■	■	■	■	■	■	■	■	■	■	■	■	■	■	■	■	■	■	■	■	■	■	■
Mobil Pegasus™ 1005	■	■	■	■	■	■	■	■	■	■	■	■	■	■	■	■	■	■	■	■	■	■	■	■
Mobil Pegasus™ 805	■	■	■	■	■	■	■	■	■	■	■	■									■	■	■	■
Mobil Pegasus™ 705*	■	■	■	■	■	■	■	■	■	■	■	■									■	■	■	■
Mobil Pegasus™ 710																								
Mobil Pegasus™ 605 Ultra 40	■	■	■	■	■	■	■	■	■	■	■	■	■	■	■	■	■	■	■	■	■	■	■	■
Mobil Pegasus™ 605	■	■	■	■	■	■	■	■	■	■	■	■									■	■	■	■
Mobil Pegasus™ 610																								
Mobil Pegasus™ 610 Ultra**		■	■	■		■	■	■		■	■	■		■	■	■		■	■	■		■	■	■

The specifications of the respective plant and engine manufacturers are priorities when selecting the right engine oil.

■ Approved

\* MOBIL Pegasus™ 705 is not recommended anymore for design of MWM engines from 2013.

\*\* For extended oil drain intervals

This document is provided for information purposes only. ExxonMobil accepts no responsibility for the contents of this document and gives no warranty to any product recommendations made within or about its effectiveness when applied to the users' business. It is the users' sole responsibility to ensure that the correct product is chosen for the given application. Always consult OEM manuals for proper recommendations for your equipment, which may depend on, for example, make, model, operating conditions. ExxonMobil shall not be responsible for any loss sustained by any person or entity in connection with use of this document. Due to continual product research and development by ExxonMobil and/or OEM, the information contained herein is subject to change without notice. All products may not be available locally. The information contained herein is Proprietary to Exxon Mobil Corporation or one of its subsidiaries. This information should not be given to unauthorised third parties without prior written consent of ExxonMobil. For additional information, please contact the ExxonMobil Technical Help Desk or contact the local ExxonMobil representative.

Updated March 2021

# Products introduction & overview - Waukesha

## Product

Product	VGF Series				VHP Series				275GL/GL+ Series				APG Series				220GL Series			
	Natural gas	Landfill gas	Sewage gas	Bio-gas	Natural gas	Landfill gas	Sewage gas	Bio-gas	Natural gas	Landfill gas	Sewage gas	Bio-gas	Natural gas	Landfill gas	Sewage gas	Bio-gas	Natural gas	Landfill gas	Sewage gas	Bio-gas
Mobil SHC Pegasus™ 40																				
Mobil Pegasus™ 1	■				■				■				■				■			
Mobil Pegasus™ 1105	■				■				■				■				■			
Mobil Pegasus™ 1107																				
Mobil Pegasus™ 1005	■				■				■				■				■			
Mobil Pegasus™ 805	■				■				■				■				■			
Mobil Pegasus™ 705																	■			
Mobil Pegasus™ 710																				
Mobil Pegasus™ 605 Ultra 40		■				■				■				■				■		
Mobil Pegasus™ 605																				
Mobil Pegasus™ 610										■										
Mobil Pegasus™ 610 Ultra*																				

The specifications of the respective plant and engine manufacturers are priorities when selecting the right engine oil.

■ Approved

\* For extended oil drain intervals

This document is provided for information purposes only. ExxonMobil accepts no responsibility for the contents of this document and gives no warranty to any product recommendations made within or about its effectiveness when applied to the users' business. It is the users' sole responsibility to ensure that the correct product is chosen for the given application. Always consult OEM manuals for proper recommendations for your equipment, which may depend on, for example, make, model, operating conditions. ExxonMobil shall not be responsible for any loss sustained by any person or entity in connection with use of this document. Due to continual product research and development by ExxonMobil and/or OEM, the information contained herein is subject to change without notice. All products may not be available locally. The information contained herein is Proprietary to Exxon Mobil Corporation or one of its subsidiaries. This information should not be given to unauthorised third parties without prior written consent of ExxonMobil. For additional information, please contact the ExxonMobil Technical Help Desk or contact the local ExxonMobil representative.

Updated March 2021